



Gemini
TWINTILE

Twice the Tile in half the time with...

Gemini
TWIN TILE

Gemini is a true innovation in roof tile design. An interlocking tile which is 270 mm x 330 mm overall, yet with its carefully judged central groove, it gives the appearance of two plain tiles side by side when laid. So you are effectively laying two tiles at a time, and as simply as you would any interlocking tile. And, because it's single lapped, and interlocked, you can lay down as low as 25° with confidence.



Gemini is a cost effective innovation, for it offers all the benefits of an interlocking tile with a significantly lower laid cost than a concrete plain tile. It is equally as cost effective for refurb as for new build, for it is single lapped and has a laid weight of just 50 kilogrammes per square metre, that's 2/3 rds the weight of ordinary double lapped concrete plain tiles.

This means that you can simply replace conventional interlocking tiles for a plain tile appearance without having to strengthen the roof structure. For new build applications, of course, you can have the look of plain tiles with the same cost savings on the roof structure.



Giving you plain tile appearance at lower pitches than ever before, or vertically if that suits your design.

And Gemini also scores top marks in saving time when laying the roof.



Normally there are 60 plain tiles to the m², whereas with Gemini there are just 19. Additionally, the plain tile is double-nailed every 3rd course, requiring a minimum of 24 fixings, compared to just 19 for Gemini and as you are interlocking two tiles at once, the resultant time savings are plain to see.

- A 270 mm x 330 mm interlocking concrete tile
- Gives the appearance of two Plain tiles side by side when laid
- With a significantly lower laid cost than a concrete Plain tile
- With a lower laid weight and faster to lay
- With only 19 tiles per m² versus 60 for Plain tile
- Lower labour and material costs on site
- Only 5.7m of battens required per m² versus 10m for Plain tile

- Complies with I.S./E.N. 490: 1994 "Concrete Roofing Tiles and Fittings".
- A complete roofing system offering a complementary range of easy to use mortar-free solutions, at the ridge, eaves, verges, hips, valleys and abutments.

Gemini complies to the requirements of I.S./E.N. 490: 1994 "Concrete Tiles & Fittings" and should be fixed in accordance with I.C.P.2: 1982 and, as with all Roadstone roofing products, it is more than just an innovative new roof tile, it's a complete roofing system.

Gemini offers a complementary range of easy-to-use, mortar-free solutions at the ridge, eaves, verges, hips, valleys and abutments which makes achieving a perfect roof covering simple.

Available in a range of four colours, Gemini is set to revolutionise the way you look at plain tiles.

Gemini

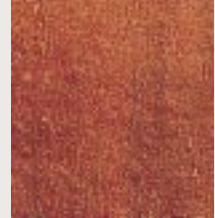
TWINTILE

SPECIFICATIONS

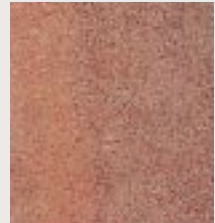


	GEMINI TILE	RH THREE QUARTER TILE	LH THREE QUARTER TILE	RH TILE AND HALF
Overall Length	270mm	270mm	270mm	270mm
Hanging Length (l_1)	248mm	248mm	248mm	248mm
Overall Width (w)	330mm	255mm	255mm	480mm
Cover Width (C_w)	300mm	225mm	225mm	450mm
Mass (approx)	2.5kg	2.0kg	1.9kg	3.9kg

COLOUR RANGE



FARMHOUSE RED



AMBER MIX



BLACK



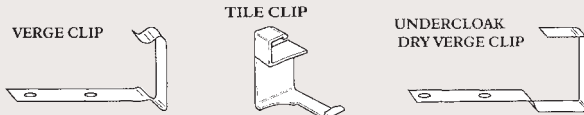
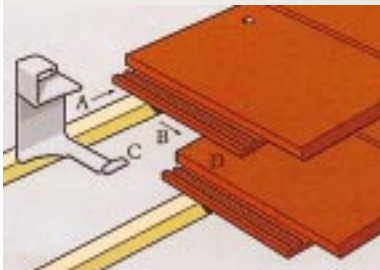
SLATE GREY

FIXING

PITCH	HEADLAP	BATTEN SPACING	BATTEN REQUIRED	TILES REQUIRED	MASS (APPROX)
25°min	95 mm max	175 mm min	5.70 lin m/m ²	19.0/m ²	48kg/m ²
	80 mm min	190 mm max	5.26 lin m/m ²	17.5/m ²	44kg/m ²

NB: To achieve the best possible aesthetic effect, it is recommended that Gemini Tiles are fixed with a batten spacing as close to 175 mm as possible.

Fixing: Use at least one Aluminium Nail 45 mm x 3.35 mm in all circumstances; verges should be clipped, using the appropriate Gemini Verge clip. A plastic clip is available to enable secure fixing in exposed locations. See Roadstone Roofing Manual.



FIXING OF GEMINI TILE CLIP

The Gemini Tile Clip is not mechanically fixed to the batten, but clips on the tile interlock (at point A). The clip is then slid down (to point B) and the curved underlock (C) locates under the back of the tile below (D).



A company within the CRH Group

Clondalkin, Dublin 22. Telephone 01 457 1116. Fax 01 457 1110.
 Goig, Castleconnell, Co. Limerick. Telephone 061 377 217. Fax 061 377 179.
 Ovens, Currabeg, Co. Cork. Telephone 021 877 997. Fax 021 876 908.
 Website: www.roadstone.ie



IS/ISO 9002/EN 29002