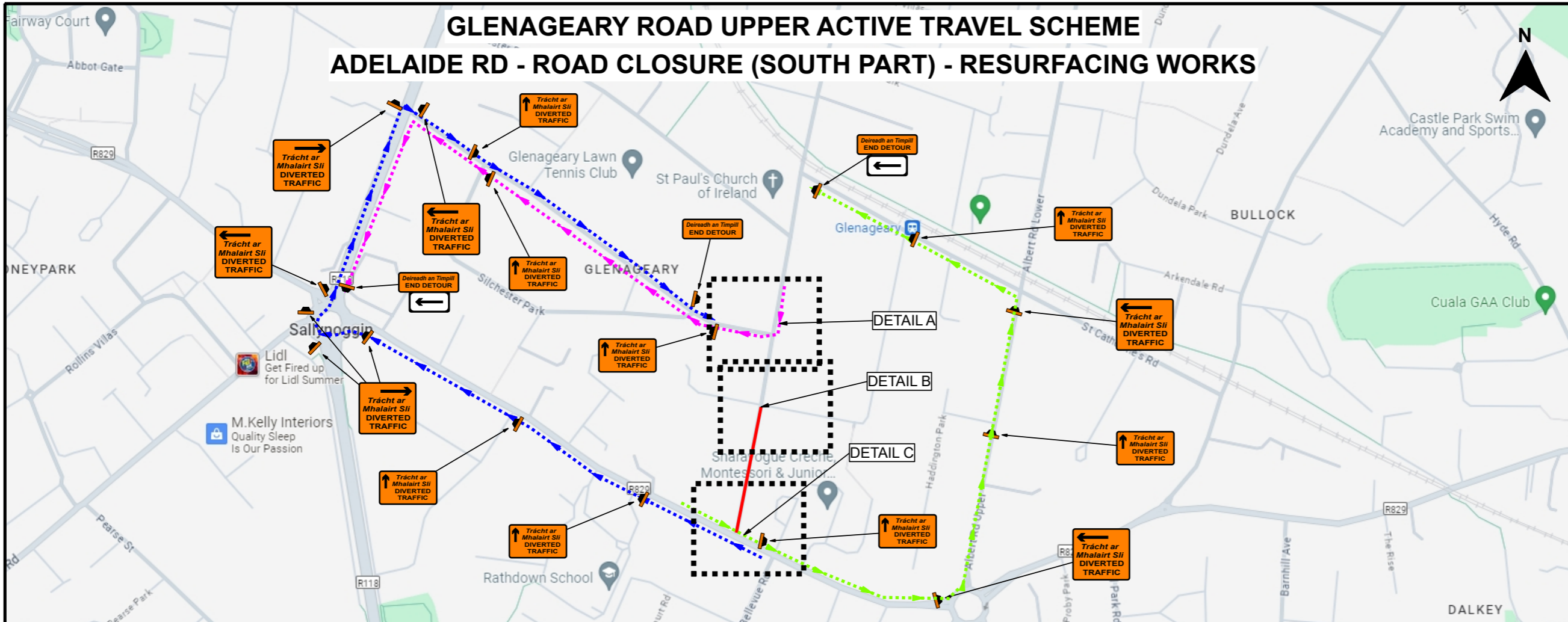
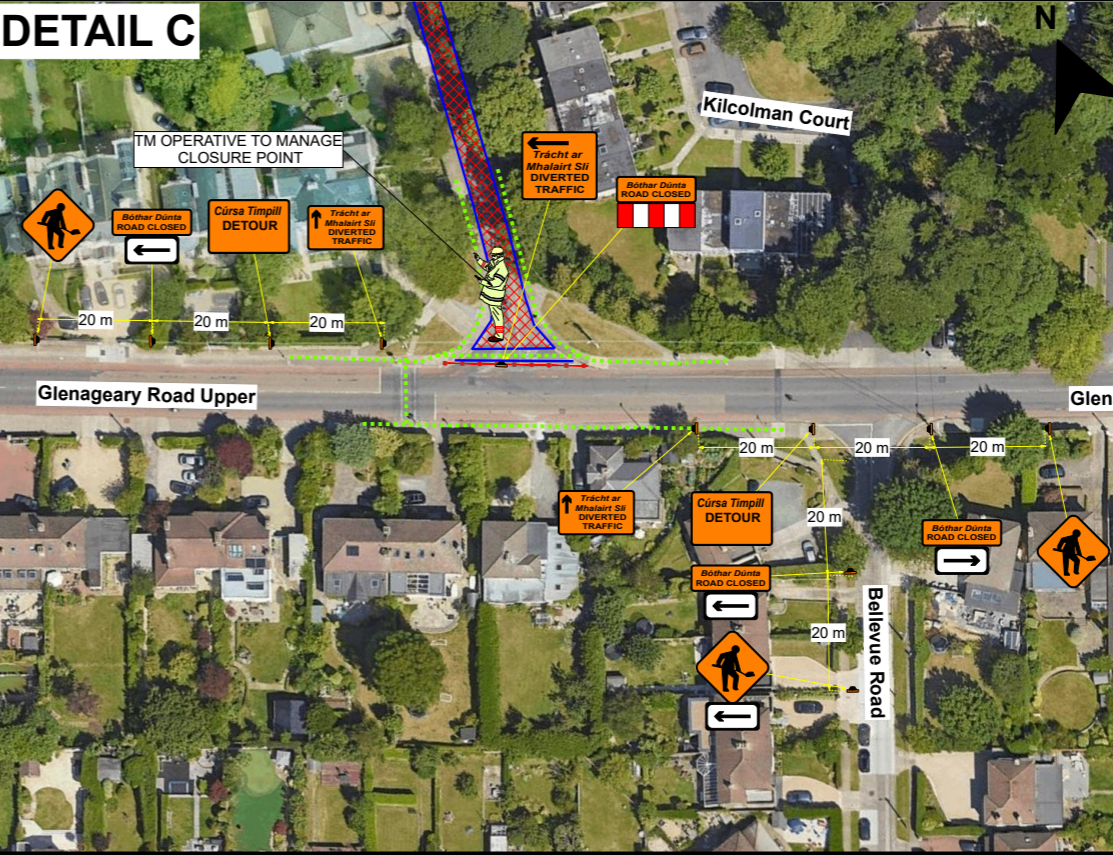
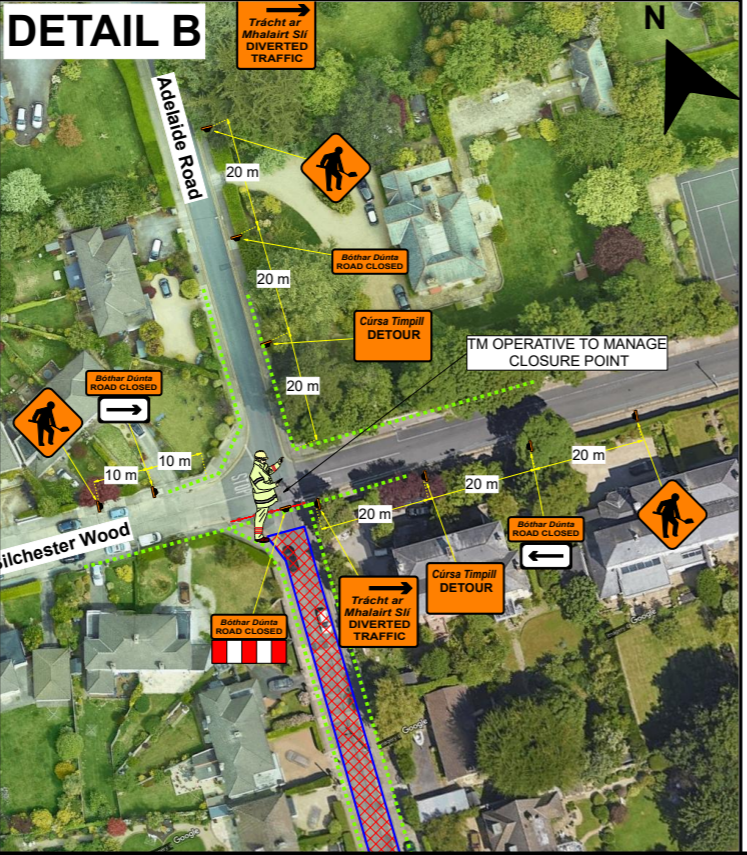
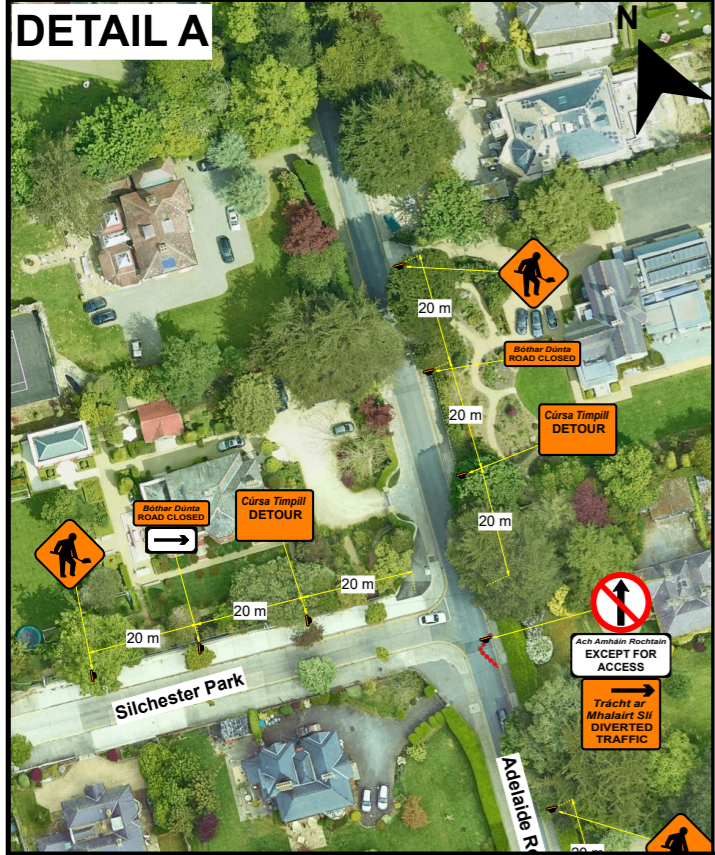
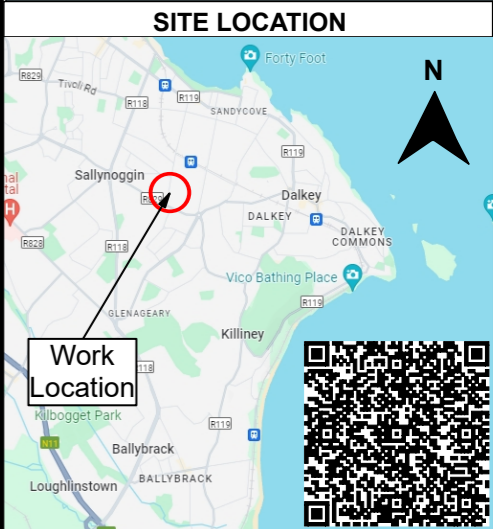


GLENAGEARY ROAD UPPER ACTIVE TRAVEL SCHEME

ADELAIDE RD - ROAD CLOSURE (SOUTH PART) - RESURFACING WORKS



DESIGN PARAMETERS	
CHAPTER 8 ROAD LEVEL:	1(iii)
SPEED LIMIT:	50km/h
ROADWORKS TYPE:	B
NUMBER OF ADVANCED SIGNS:	2
SIGN VISIBILITY:	50m
ADVANCED SIGNAGE DISTANCE:	20m
SIGNS SIZE RECTANGULAR - MIN:	600mm
SIGNS SIZE CIRCULAR - MIN:	600mm
CONE HEIGHT - MIN:	750mm
TAPER CONE SPACING:	N/A
LONGITUDINAL CONE SPACING:	N/A
RATE OF TAPER:	N/A
SAFETY ZONE:	N/A
UNOBSTRUCTED WIDTH:	N/A
MAXIMUM LENGTH OF SUTTLE:	N/A
MINIMUM LANE WIDTH:	N/A
TM SYSTEM:	ROAD CLOSURE



SITE SPECIFIC NOTES

-LOCAL ACCESS TO BE MAINTAINED WHEN POSSIBLE.

Legend

	Cone		Diversion Route 1
	Diversion Route 2		Diversion Route 3
	Pedestrian barrier		Safety Zone
	Taper		Temp Traffic Sign
	Work Area		

REV	DESCRIPTION	DATE	REV/CHK BY

CLIENT:

PROJECT: GLENAGEARY ROAD UPPER ACTIVE TRAVEL SCHEME

COMPLETE HIGHWAY MAINTENANCE

EMAIL: info@chmtd.ie / WEB: www.chmtd.ie

DUBLIN OFFICE
UNIT 28, SECOND AVE
COOKSTOWN INDUSTRIAL
ESTATE, D24 H9PA
TALLAGHT, CO. DUBLIN
TEL: (01) 424 2070

CORK OFFICE
UNIT 6, WATERGRASSHILL
BUSINESS PARK,
T56 TD42
WATERGRASSHILL,
CO. CORK
TEL: (0) 21 488 9581

- GENERAL NOTES**
- THIS TRAFFIC MANAGEMENT PLAN MAY ONLY BE IMPLEMENTED BY A TEMPORARY TRAFFIC OPERATIONS SUPERVISOR (TTOS) WHO MUST CARRY OUT A SITE RISK ASSESSMENT TO MODIFY (IF NECESSARY) THE MEASURES DESCRIBED TO SUIT ACTUAL SITE CONDITIONS BEFORE IMPLEMENTATION.
 - THE TTOS MUST BE IN POSSESSION OF THE VALID CONSTRUCTION SKILLS REGISTRATION CARD 'SIGNING, LIGHTING, AND GUARDING AT ROADWORKS' CONSTRUCTION REGULATIONS 2006.
 - THE TTOS TO DETERMINE EXACT POSITION OF SIGNS CONSIDERING THE SITE SPECIFICS.
 - IN ORDER THAT THE REQUIREMENTS AS SET PER SECTION 17(2) 2005 ACT ARE SATISFIED, FURTHER ALTERATION TO THE PLAN MUST BE ADVISED BY THE PSDP AS PER CONSTRUCTION REGULATIONS 2006 PS 5, REGS 16-17 AND REG 97 (2a & 2b) RESPECTIVELY. IN ADDITION THE PSCS SHOULD FURTHER DIRECT ANY CHANGES AS THE PROJECT PROGRESSES.
 - ALL WORKS ARE TO BE CARRIED OUT IN ACCORDANCE WITH LOCAL AUTHORITY REQUIREMENTS AND TO BE INCLUDED IN THE SITE SPECIFIC SAFETY & HEALTH PLAN.
 - MAINTENANCE CHECKS SHOULD BE CARRIED OUT AT REGULAR INTERVALS AND IN ACCORDANCE WITH CONTRACT SPECIFICATIONS.
 - TEMPORARY SIGNS SUPPORTS OR STANDS SHOULD BE DESIGNED IN ACCORDANCE WITH SPECIFICATION TS4.
 - CONTRACTOR TO CARRY OUT A SITE RISK ASSESSMENT PRIOR TO THE INSTALLATION OF THE TRAFFIC MANAGEMENT PLAN TO ENSURE THAT CONDITIONS REFLECT THOSE CONSIDERED FOR DESIGN POST SUBMISSION.
 - ALL SIGNS USED FOR THIS TRAFFIC MANAGEMENT PLAN MUST COMPLY WITH CHAPTER 8 OF TRAFFIC SIGNS MANUAL LATEST EDITION.
 - WK 052 / WK 053 TO BE USED WHEN A DESIGNATED WORKS ACCESS IS REQUIRED. REFER TO CH. 8 FOR USAGE. BANKSMEN TO MANAGE SITE ACCESS & EGRESS.
 - THE ABSOLUTE MINIMUM WIDTH ALLOWED FOR PEDESTRIANS IS 1.2M AND FOR A ONE-WAY CYCLE TRACKS IS 1.25M.
 - SAFETY BARRIERS USED FOR THIS TMP MUST COMPLY WITH TII DN-REQ-03034-1 IS EN 1317-1 e) TEMPORARY SAFETY BARRIER.
 - THE CONTRACTOR SHALL BE RESPONSIBLE FOR PROVIDING ALL REQUIRED RAMP ACCESS TO ALL CHANGES IN ROAD SURFACE LEVEL WHERE TRAFFIC RUNS ON A TEMPORARY SURFACE AND ALSO FOR CYCLE/PEDESTRIAN RAMP WHERE THERE IS A LEVEL DISCONTINUITY AS A RESULT OF THE WORKS ON CYCLE PATHS & FOOTPATHS.
 - ADDITIONAL SIGNS MAY BE USED TO COMPLEMENT THE SPECIFIC SIGNS USED AT THE ROADWORKS: WARNING SIGNS - YELLOW BACKGROUND - DESCRIBED IN CHAPTER 6. REGULATORY SIGNS - DESCRIBED IN CHAPTER 5, ETC. THEY ALL MUST COMPLY WITH THE SPECIFICATIONS OF 'TRAFFIC SIGNS MANUAL' AND 'TS4: GUIDELINES, CERTIFICATION SCHEME AND SPECIFICATION FOR CONSTRUCTION OF TRAFFIC SIGNS'.